

2021-2022



# SAFFRON | Annual Centre | Report



# CONTENTS

## Table of Contents

---

04.

Shared Vision

05.

Message From Our Board Chair

06.

Message From Our Executive Director

08.

A Year of Impact

12.

Counselling

14.

Justice, Research, & Outreach

20.

Volunteers & Events

21.

Governance & Gratitude

# LAND ACKNOWLEDGEMENT

---

*With respect, and in the spirit of reconciliation and truth, we honour and acknowledge that where we are, here in Alberta (Treaties 4, 6, 7 & 8) are the traditional and ancestral territory of many diverse Indigenous peoples, namely: the Blackfoot Confederacy – Kainai, Piikani, and Siksika – the Cree, Dene, Saulteaux, Nakota Sioux, Stoney-Nakoda, the Tsuu T’ina Nation and the Métis People of Alberta. We acknowledge and are grateful to the many First Nations, Métis and Inuit peoples who have lived in and cared for these lands for generations and whose histories, languages, and cultures continue to influence our vibrant community.*

# SHARED VISION

---

The Saffron Centre would not exist without the dedication and commitment of the board, staff, students, and volunteers. These dedicated people walk with clients on a journey of healing and hope and engage with communities to work collaboratively toward ending sexual violence.

## MISSION

Provide tools for healing and support for those who have been impacted by sexual violence. Proactive education to empower the next generation to end sexual violence. Support throughout the reporting and court process.

## VISION

Ending sexual violence by the next generation.

## SAFFRON TEAM

Roxane Tiessen	-----	Executive Director
Debbie Fillion	-----	Director, Counselling Program
Kiara Warkentin	-----	Director, Justice, Research, & Outreach
Deborah Watson	-----	Assistant Director, Counselling Program
Pamela Wallace	-----	Executive Assistant
Tina Rieland-Paquette	-----	Administrator & Volunteer Coordinator
Jenn Baron	-----	Therapist
Felicity Bohnet	-----	Therapist
Amy Goudie	-----	Therapist
Sarah Hopkins	-----	Therapist
Reena Samra	-----	Therapist
Chris Shorrocks	-----	Therapist
Cassandra Fillion	-----	Clinical Facilitator
Michaela Grenier	-----	Clinical Facilitator
Nancy Skorobohach	-----	Public Educator
Kristen Einarsson	-----	Public Educator
Kirsten McChesney	-----	Police and Court Advocate
Mackenzie Thomas	-----	Special Projects Facilitator
Cheryl Assaly	-----	Administrator
Madison Gingell	-----	Administrator
Hanna McGee	-----	Administrator

# MESSAGE FROM OUR BOARD CHAIR

---

I open this message with a word of thanks. Thank you to all who have provided financial support to Saffron. In doing so, you have enabled our public education team to continue its work to end sexual violence through education and allowed our counselling staff to support those impacted by sexual violence. I would also thank our leadership team for their dedication and commitment, as well as my fellow board members for their time and energy working to ensure effective oversight and transparent governance.

During this past year, Katie Kitschke retired as Executive Director of Saffron after 14 years of service to the organization in various capacities, including leading our education program and ultimately serving as Executive Director. Katie was instrumental in the growth of Saffron, and each of us owes her a debt of gratitude for her commitment and dedication. We wish Katie continued success as she applies her skills to new challenges.

After an extensive external search for a new Executive Director, our new leader came from our existing ranks. Roxane Tiessen, our previous Chair and Treasurer, assumed the responsibility of Interim Executive Director in March of this year and, subsequent to our external search, agreed to accept the role of Executive Director in July 2022. Roxane brings many years of board experience, financial acumen, and leadership to accompany her formal schooling with a Bachelor of Education. On behalf of the Board, we are delighted to have Roxane serve in this capacity at Saffron as we continue to meet the growing and evolving needs of the members of our community.

The Board is made up of committed volunteers from various professional backgrounds and I am thankful for a Board that works effectively and collaboratively to support the work of Saffron. We welcomed two new Board members and said farewell to two others after their many years of committed service to the Board.

Our vision to end sexual violence is unwavering. This will only be possible through the continued support of our grant funders, private sector partners, donors, volunteers, and Saffron's exceptional staff. We will continue to work together to bring hope and healing to those affected by sexual violence.

Thank you all again for your dedication and support.



**Mike Shellenberg**  
Board Chair

**”**  
We will continue to work together to bring hope and healing to those affected by sexual violence. Thank you for your continued dedication and support of Saffron.

# MESSAGE FROM OUR EXECUTIVE DIRECTOR

---

As I consider this past year at Saffron, it is marked by growth, adaptability, and resilience, with compassion as the common thread throughout. Saffron's phenomenal staff team has exhibited those traits in a year that saw a change in leadership, significant and growing demand for services, and the continued uncertainty of COVID. I am honoured to serve as the new Executive Director of this remarkable organization. Over my past eight years on the Board of Saffron, I have had the privilege of getting to know firsthand the dedicated people that are leading and working within our counselling, education, and police and court programs. From our educators, trauma therapists, police and court advocates, to our administrative support staff, students, and volunteers, Saffron is blessed to have a dedicated group of professionals committed to walking with our clients as they journey toward healing. I look forward to working with this team to grow and develop the programs we provide to people in our community.

This year began with program delivery that continued to be affected by COVID, resulting in the ongoing virtual provision of services for the first half of the fiscal year. As COVID waned, we transitioned to a post-COVID environment with a renewed focus on providing services to clients based on the client's desire to return to in-person services or through the continuation of virtual services. And while our programs were being very effectively delivered virtually throughout the past two years, our staff are grateful to engage in person with clients, students, parents, and community members, delivering prevention-focused education, healing through counselling, and support for reporting. Our offices are once again fully open, and our clients now benefit from the delivery of services in the way that best suits their needs.

We achieved a number of accomplishments in the past year that will position our organization for continued growth and development. Working with our landlord and with the support of a Community Facility Enhancement Grant from the Government of Alberta, we successfully completed a renovation to optimize the office space at our centre. This renovation supports the staffing requirements necessary to meet the significant increase in counselling hours, a new space for satellite and supported reporting and counselling, and a space fully dedicated for play therapy used to support many of our youngest clients.





# MESSAGE FROM OUR EXECUTIVE DIRECTOR

---

Demand for all our programming soared this year. From increasing numbers of intakes and the provision of increased counselling hours to meet that demand to the significant number of clients supported through our police and court program, and the record number of educational presentations delivered over the past year, Saffron innovated to meet that increasing demand. Education remains one of the pillars through which we can create a culture of consent and work toward eliminating sexual violence in our community.

Our specialized police and court support program, established in 2019, was able to support clients through education about the criminal justice process, reporting to police and support throughout investigation and through trial, judgment, and sentencing. Throughout COVID, this program continued to provide supported and satellite reporting in person while also shifting online in alignment with Alberta courtrooms. We also piloted an innovative new court counselling program to help minimize potential re-traumatization that can occur through the reporting and court process.

Another key accomplishment was the signing of the Violence, Trauma, Suicide Prevention protocol spearheaded by Strathcona County and, of which Saffron is one of 16 community partners. This community initiative leverages the expertise of many organizations and facilitates communication and collaboration in the prevention of traumatic events.

There are many more achievements that are highlighted throughout this report. I am truly grateful for the cohesiveness that both our volunteer board and leadership team demonstrate in focusing on the activities necessary to meet the needs of the people that we support.

I look forward to continuing the journey with our incredible Saffron team as we support hope and healing for all those affected by sexual violence.



**Roxane Tiessen**  
Executive Director

”  
A year marked by growth, adaptability, and resilience, with compassion as the common thread throughout.

# A YEAR OF IMPACT

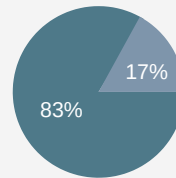
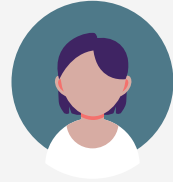
## Counselling



**3663**  
Counselling Hours  
↑+28%

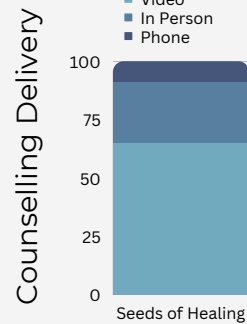
- Seeds of Healing
- Foundations of Healing
- Healing and Beyond

**393** ↑+41%  
Clients



Children & Youth  
Adults

**393**  
Intakes



Average Wait Time:  
7.7 Weeks

↓-35%

**238**  
New Clients



### Program Outcomes

- 71% of clients reported a reduction in overall symptoms of trauma
- 92% of clients reported having made progress toward their goals
- 100% of clients reported developing the skills they need to be able to meet their goals
- 96% of clients describe having a better understanding of the effects that sexual abuse/assault has had on their lives
- 100% of clients felt their counsellor understood the impact the sexual abuse/assault had on them



# A YEAR OF IMPACT

## Education



**576** Presentations  
**16,845** Participants

90% Youth  
10% Adults

**+73%**  
presentations

*"This organization has some of the best presentations I have witnessed."*

*"I think [the presentation] was really helpful, I have made mistakes before and to know I'm not alone is very reassuring."*

*"I'm the teacher of the group and I learned something new."*

*"I Believe You"*

*"The skills were instantly useable - I had a great discussion with my 14 year old granddaughter right afterwards."*

### Top 5

1. Internet Safety
2. Healthy Relationships
3. Sexual Assault & Harassment
4. Exploring Masculinity Workshop
5. Learning About Trauma



**2,766** Post-Presentation Surveys

89.6% Reported an increase in their knowledge on the topic

77.5% Reported an increased in their skills

88.4% Reported a change in their behaviour



# A YEAR OF IMPACT

## Justice

**119**

Clients served

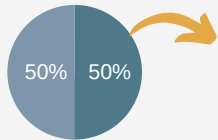
**↑ +63%**



**725**

Client hours

**26** Accompaniments



**50%** Court Accompaniment  
**50%** Police Interviews

**8**  
**13**

Police interviews were conducted in Saffron's satellite reporting room

**1936**

Client contacts



Virtually



In-person



Phone

## Research

Survey research from **547** youth ages 12-18 found that:

**64%** of respondents have experienced or knows someone who has experienced sexual violence

**59%** of respondents have experienced or knows someone who has experienced online sexual violence

Our results confirm AASAS' original research regarding the prevalence on sexual violence in Alberta

**58%** of respondents indicated that they feel safe from sexual violence in their communities

**42%** of respondents indicated that they feel safe from online sexual violence

**62%** of respondents have unintentionally viewed pornography

Saffron's survey research continues to inform the development of new content across our departments.



# A YEAR OF IMPACT

## Outreach & Volunteering

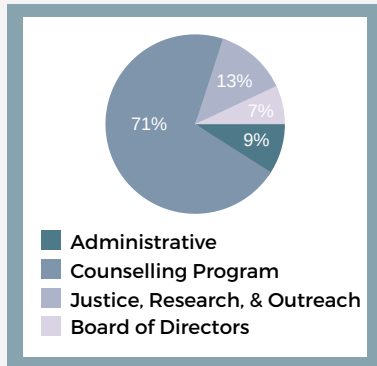
Staff spent a total of

**675**

hours engaged in outreach



**3,992** Followers on social media



**3,861** ↑ +44%  
Total volunteer hours

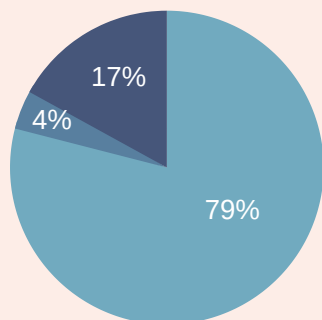


Total number of people educated and supported through Saffron's services

**17,357**

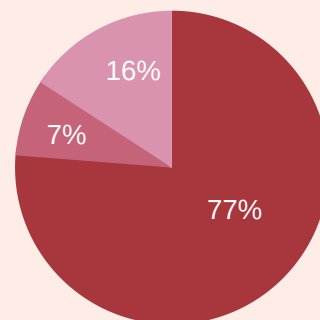
## Financial Report

Total Revenue:  
**\$1,286,368**



- Grants
- Donations and Fundraising
- All Other Revenue

Total Expenses:  
**\$1,087,452**



- Salaries, Wages, and Benefits
- Occupancy, Amortization, & Insurance
- All Other Expenses

# COUNSELLING

---

Saffron Centre's counselling department consists of a variety of programs to meet the specific needs of our clients. Seeds of Healing is provided by our team of specialized therapists to address trauma symptoms that result when a person has experienced sexual violence. Foundations of Healing, offered in both group and individual formats, is a psycho-educational program that teaches coping skills to manage the effects and impacts of trauma. Finally, our Healing & Beyond group program provides support for those who have moved through the survival phase of healing and are looking to build community and connection. This year, we also developed and launched our Court Counselling Program to provide short-term, specialized counselling support to clients preparing for sexual violence trials.

Over this last year, we have increased services to our clients in large part by expanding our Student Intern program. Saffron hosted and trained nine masters-level practicum students in varying graduate programs, from counselling to psychology to social work, in developing deeper and broader skills in healing trauma. We are very proud of our interns and have received feedback from their clients that the students' support has helped them experience healing and growth. The time and energy given by our interns helped increase the capacity of our counselling program; with significant growth seen in our Foundations of Healing program and in the creation of our trial Court Counselling project. The efforts of our interns also helped our clinical facilitators manage the 22% increase in intakes over the last year. We are proud of the fact that many of our interns return to volunteer or even apply for a position here once they have completed their internship. Of the six students that finished their practicums during the year, five continued with us in some capacity. That would seem to indicate they value the atmosphere and experiences Saffron provides.

In addition to giving our interns opportunities to use their counselling skills and knowledge, Saffron supervisors encouraged them to lean on their strengths and passions to create new programming to address client needs. As a result, unique offerings for this year included a self-care for healing group which utilized yoga and other self-care activities; a trauma-informed connection group where participants practiced skills in reaching out to create stronger relationships both with themselves and others; and two different iterations of our Foundations of Healing group, one of which focussed on teens, and one for support people (mainly parents and partners of people who had been affected by sexual trauma). Some of the most interesting feedback came from the clients themselves about how their loved one's involvement in supportive psychoeducation had been beneficial to the client personally by helping them feel more understood and supported.

# COUNSELLING

---

With all the program growth came the need for physical expansion as well. Through renovations of Saffron's office space, we gained two new counselling offices, a new playroom, and a dedicated reporting room that is also used as an additional counselling space, especially for sessions with everyone's favourite furry co-therapist, Yukon. Our increased space meant we could accommodate more therapists. We saw our numbers of children and youth clients increase by 120% over the year, so we focused our efforts on hiring additional counselling staff who had specialized skills to work with this age group. This expansion helped those vulnerable clients get off the wait list and into counselling faster.

Saffron's robust work culture includes diversity in counselling approaches and therapist designations: in addition to our intern therapists, trauma coaches and clinical facilitators, we also have licensed social workers, psychologists and Canadian-certified counsellors working and consulting together, sharing strengths, philosophies and camaraderie. Our staffs' assorted training have all been aimed, in a variety of ways, at best supporting our client base of those people impacted by sexual violence. In addition to general overview courses for working with survivors of sexual trauma, group therapy, best ethical practices in counselling, and multi-part courses in working with chronic suicidality, hundreds of hours of more specialized study and training were spent learning more about polyvagal theory, Internal Family Systems, Emotion Focussed Therapy for Individuals, Somatic Therapy, Humi x Inkblot Therapy, Trauma-focused ACT, working with ADHD, working with complex trauma and dissociation, expressive arts, working with preverbal trauma, adapting EMDR to work with Indigenous Peoples, combatting burnout, and advanced EMDR and Accelerated Resolution Therapy skills. Not all staff participated in all the trainings, but each freely shares their knowledge and understanding in case conferences and consultations as we work together to formulate the best ways to address individual client needs.

As our programming continues to adapt to the specific needs of our clients and community, we are grateful for the ongoing support of our volunteers, student interns, and staff members that are such a vital part of Saffron's Counselling program. We look forward to continuing to adapt to new challenges, supporting the growth and development of our team, and walking along with our clients on their journey toward healing.



**Debbie Fillion**  
**M.C., Reg. Psychologist**  
**Director, Counselling Program**

11  
100% of clients reported developing the skills they need to be able to meet their goals.

# JUSTICE, RESEARCH, AND OUTREACH

---

## JUSTICE

The Specialized Police and Court Support (SPCS) Program exists to provide trauma-informed support to individuals navigating the investigative and judicial processes, from pre-reporting through to sentencing. Our department operates as a community-based victim services unit serving the greater Edmonton area. In the last year, our files have increased by 63% in the SPCS program.

It would not be possible to operate this program without the partnership of several criminal justice agencies and community organizations in our area. Major criminal justice partners include the Strathcona County and Fort Saskatchewan RCMP and Victim Services Units, the Edmonton Rural & Regional Response Office, the Edmonton Crown Prosecutors Office, and our local courthouse. Community partnerships include Family and Community Services, the Centre to End All Sexual Exploitation (CEASE), and our fellow AASAS network members across Alberta.

### WATCH PRESENTATIONS

Last year, Saffron was invited into the Strathcona County RCMP detachment to provide presentations on services to members as they started their unit shifts. Throughout the year, members have approached our team at various events and remembered our presence in the detachment. We hope to continue these presentations in the coming years.

### LAUNCH OF SATELLITE REPORTING ROOM

In September of 2021, Saffron launched our satellite reporting space in collaboration with the Strathcona County RCMP. Our reporting room gives clients the choice of where and how they would like to report sexual violence to police, resulting in a more trauma-informed interviewing process. In the year we launched, we used the satellite room 8 times.

### COURT COUNSELLING PROGRAM

The purpose of this project is to provide short-term, specialized counselling support to individuals who are preparing for sexual violence trials with the goal of minimizing re-traumatization associated with giving testimony. The Court Counselling Program launched at Saffron in September of 2021. Due to COVID-19 setbacks, the program supported four clients this year and continues to operate in the new fiscal year.



# JUSTICE, RESEARCH, AND OUTREACH

---

## YUKON

One of Saffron's greatest accomplishments this year was securing placement with our Facility Support Dog, Yukon, who joined our Centre in April 2022. Our placement process began in 2018 when we applied to be on a waitlist for a Facility Support Dog with the Lions Foundation of Canada Dog Guides in Oakville, Ontario. We received word of our approval in the Fall of 2021 and quickly fundraised over \$30,000 to support her placement.



In April, our team met and immediately fell in love with Yukon, our energetic and endlessly happy black Labrador Retriever. She has introduced a new sense of joy and purpose in the work Saffron does and has bonded with her handler team. Yukon works primarily in the Specialized Police and Court Support Program, helping people to stay calm and grounded in court preps, police interviews, and on the witness stand. She also works with our therapy team in client counselling sessions, serving as a physical and emotional sense of support, and elevating the level of service that we provide to those who have been impacted by trauma. All staff interested in working with her through the counselling program completed training facilitated by her handlers. By the end of June 2022, Saffron deployed Yukon 24 times in counselling, police interviews, and community engagements.

Saffron would like to express our gratitude to Esther and Ted, Yukon's puppy raisers, for their love and dedication to her early years of training.

Thank you again to all private donors and the following companies for their support with Yukon's placement; Apex Contracting Inc., Mills Haven Animal Hospital, Flare Mortgage Group, Edmonton Humane Society, County Clothes-Line and Classic Family of Companies.

# JUSTICE, RESEARCH, AND OUTREACH

---

## RESEARCH

Saffron's Justice, Research and Outreach Team began a large-scale research project designed to test the prevalence rates of sexual violence that were released by the Association of Alberta Sexual Assault Services in January 2020. This project was deployed across schools and youth community services that Saffron was engaged in and resulted in 547 youth surveyed last year. Youth who answered this survey were between the ages of 12 and 18 and lived in the City of Edmonton and the Greater Edmonton Area.

Our findings confirmed the original research conducted by the Association of Alberta Sexual Assault Services (AASAS) regarding the prevalence of sexual assault and harassment within the community. Our survey research continues to inform the development of new programming as we look for new ways to best serve our surrounding communities and the issues most relevant among them.

## OUTREACH

This year, Saffron staff, students, and volunteers spent hundreds of hours doing community engagement and outreach work. Our outreach efforts refer to our time spent attending and hosting community events, meeting with new agencies and companies to increase awareness about sexual violence prevention and finding ways to decrease barriers to accessing services at Saffron for underserved groups.

### COMMUNITY

Saffron is grateful for donations from Sarasota Homes, Hastings Lake Greenhouse, South Cooking Lake Greenhouse, and Salisbury Greenhouse to build a community garden for our clients outside of our Centre. For two summers, our team has grown fruit, vegetables, herbs and flowers for our clients to take home with them after sessions. The garden has also served as a debriefing space for our team on difficult days.



# JUSTICE, RESEARCH, AND OUTREACH

---



In the Spring, our team was invited to the Stand Up Walk to end sexual violence and acknowledge its disproportional impact on Indigenous women alongside the Creating Hope Society, community Elders, the Sexual Assault Centre of Edmonton, and the Centre to End All Sexual Exploitation. Saffron's Director of Justice, Research and Outreach spoke at the event with Facility Support Dog Yukon, and Outreach workers were on site to share resources and listen to other participants' stories.

## COLLABORATIONS

In 2021, Saffron's Justice, Research, and Outreach Team joined the Centre to End All Sexual Exploitation's Client Support Network, joining several other agencies in the Edmonton area that serve vulnerable populations.

This year, Saffron also joined the Fort Saskatchewan Youth Working Group, which collaborates to address trends affecting youth well-being in Fort Saskatchewan and the surrounding area. Through this partnership, Saffron has presented content in all levels of school and continues to collaborate with The Bridge Youth Hub.

In March 2022, Saffron signed on as a community partner to Strathcona County's Violence, Trauma and Suicide Prevention Protocol. The Protocol is the first of its kind in North America and represents a community-wide response to violent and traumatic events through both preventative and responsive action.



## DECREASING BARRIERS TO ACCESS

Saffron is an active member of the Alberta Specialized Police and Court Support Network, which allows police and court advocates to engage with one another, share information and consultation, and more easily refer clients. In 2022, the SPCS network received a Community Justice Award nomination through the Justice and Solicitor General.

# JUSTICE, RESEARCH, AND OUTREACH

---

## PUBLIC EDUCATION

Saffron's Public Education Program strives to address some of the most prevalent issues related to sexual violence in our community. The program operates with the goal of educating youth, caregivers, and professionals to increase awareness and prevent harm caused by sexual violence. This year was busy for our team of Educators as they provided 576 presentations and workshops to the community, an increase of 73% from the year before. Saffron was proud to educate 16,845 individuals this year, with over 15,000 youth and children making up the participant volume.

### IMPACTING CHILDREN AND YOUTH

Our Public Education content has been built over 22 years of research and is consistently updated throughout the year to ensure that the material is new and accurate. As we updated content through the Summer for the next school year, we incorporated several new elements into our material. For Healthy Relationships, our team researched extensively and added information on dealing with rejection and shame. In Sexual Assault & Harassment, we chose to create a case study from the Supreme Court of Canada decision on extreme intoxication and automatism that was released in the Summer of 2021 to



show how information may be easily misrepresented on social media. Lastly, we consulted with RCMP to adjust information on our Internet Safety presentation to ensure that Criminal Code information on sharing intimate images was as accurate as possible.

### EDUCATING PARENTS AND CAREGIVERS

Saffron's Public Education program is hinged on the principle of wrap-around education. Our team believes that educating parents and caregivers about the same topics we teach children and youth generates a commonality of language and understanding, which fosters relationship-building. The health of parent-child relationships is paramount to the effort of sexual violence prevention.



# JUSTICE, RESEARCH, AND OUTREACH

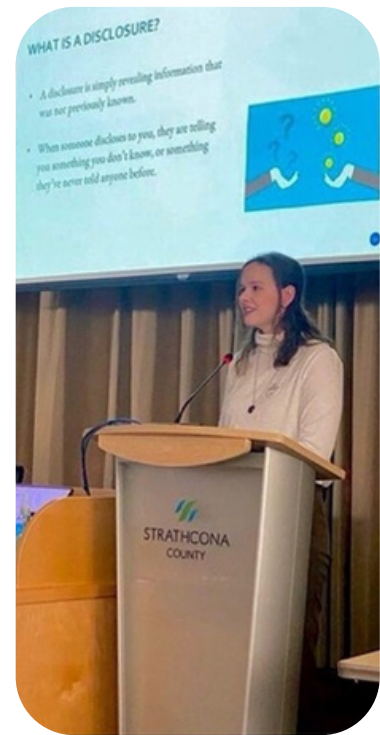
---

This year, we introduced a new parent presentation called Foundations of Connection: How to Communicate with your Youth. The presentation represents an adult-version of our Healthy Relationships content for youth and teaches parents the language our team uses to communicate consent and boundaries to their children. Our longest-standing parent presentation, Cyberworld: What Happens When Youth Press Send?, also received a major update. In consultation with RCMP and parents, and by mapping out sexual violence trends through the COVID-19 Pandemic, Saffron decided to expand this presentation by adding significant content on online child sexual exploitation. This year's update includes information for parents on grooming and luring strategies used to access youth online and strategies to intervene in potentially exploitative circumstances.

## RESOURCING PROFESSIONALS

The final piece to Saffron's Public Education model involves the resourcing of professionals to continue doing the work that impacts youth and prevents future sexual violence. This year, we were proud partners with multiple Family and Community Services locations, including Strathcona County, Fort Saskatchewan, and Flagstaff. Our team, including volunteers, students and staff collaborated on research throughout the year to develop and finish multiple professional projects, including two half-day workshops: Trauma Informed & Disclosure Training and Responding to Online Exploitation & Digital Literacy.

Saffron also continued delivering our one-hour workshops, which continue to include shorter versions of Disclosure Training and Trauma-Informed Communities. Our workshop on Online Child Sexual Exploitation was consolidated into the parent Cyberworld presentation to offset gaps identified in both sets of material. Our only youth-friendly workshop, Bystander Intervention to Sexual Assault and Harassment, remained popular throughout the year. Altogether, Saffron delivered exactly 100 workshops this year.



**Kiara Warkentin**  
Director, Justice, Research, & Outreach

Our team believes that educating parents and caregivers about the same topics we teach children and youth generates a commonality of language and understanding, which fosters relationship-building.

# VOLUNTEERS AND EVENTS

---

## VOLUNTEERS

With a return to in-person events, volunteer support grew significantly this year. This included our administrative volunteers, who dedicate their time to supporting our front desk staff, responding to client calls and emails, providing after hours phone support for our clients in the evenings and alternating Saturdays and much more. Almost 40 event volunteers supported our Consent Event and were instrumental in its success. The meaningful contributions of both our event volunteers and the long-term commitment of our administrative volunteers continue to be invaluable to our organization.

## CONSENT EVENT

In May 2022, Saffron held our annual “Consent Event,” a fun run/walk fundraiser. This year was especially meaningful as this was our first time back in-person since the COVID pandemic began. It was so wonderful to see everyone in the community come out in support of our organization. Newly launched this year was our “Everyone wins wheel,” which helped Saffron to raise additional funds. We were fortunate enough to have had sponsors provide us with some amazing prizes, from gift cards to cookies and chocolates, and even some dog treats for our furry race participants. As this was also Yukon’s first time attending our fun run/walk, we decided to celebrate by inviting special community partners, including the RCMP, Strathcona Family and Community Services, and Victims Service Units.

This year’s Consent Event helped to raise almost \$10,000.00 from both Corporate Sponsorships and Participants. This funding contributes to our counselling, public education and Justice departments thriving, as well as raising public awareness within the community about who we are and what services we provide. None of this would have been possible without the 37 volunteers we had helping to ensure the day’s events ran smoothly, many of whom volunteered with us year after year. We could not have done it without them.



**Tina Rieland-Paquette**  
Office Administrator & Volunteer Coordinator



# GOVERNANCE AND GRATITUDE

Thank You to Our

## 2021-2022 BOARD OF DIRECTORS

Mike Shellenberg ----- Chair/Treasurer

Bill Tonita ----- Vice Chair

Ken Glover ----- Secretary

Roxane Tiessen ----- Director      Nicole Labreque ----- Director

Tracy Melnyk ----- Director      Sharon Shiniman ----- Director

Carrie Ellinger ----- Director

## OUR FUNDERS

Saffron is grateful for the ongoing financial support that we receive from our many funders. To our grant funders and our many corporate and individual private donors, thank you so much for your generous contributions. With your ongoing support, we can continue to support those impacted by sexual violence.  
From everyone at Saffron Centre,  
*Thank You.*



Women and Gender Equality Canada

Femmes et Égalité des genres Canada



Department of Justice Canada

Ministère de la Justice Canada

